

The schedule and lineup for 1919:

**THE SCHEDULE**

St. Louis	16	Mt. Pleasant	19
Midland	12	Mt. Pleasant	25
Alma	13	Mt. Pleasant	29
Clare	6	Mt. Pleasant	44
St. Louis	7	Mt. Pleasant	44
McBain	31	Mt. Pleasant	60
Indian School	8	Mt. Pleasant	44
Midland	28	Mt. Pleasant	14
E. Lansing' M.A.C.	5	Mt. Pleasant	20
St. Marys, M.A.C.	9	Mt. Pleasant	8
	<hr/>		<hr/>
	135		307

**LINEUP**

Forwards  
B. Calkins  
H. Moore

Subs.: R. Larzelere, F. Sage

Guards  
E. Pease, (Capt.)  
E. Orser

Signed, E. O.

**BASEBALL**

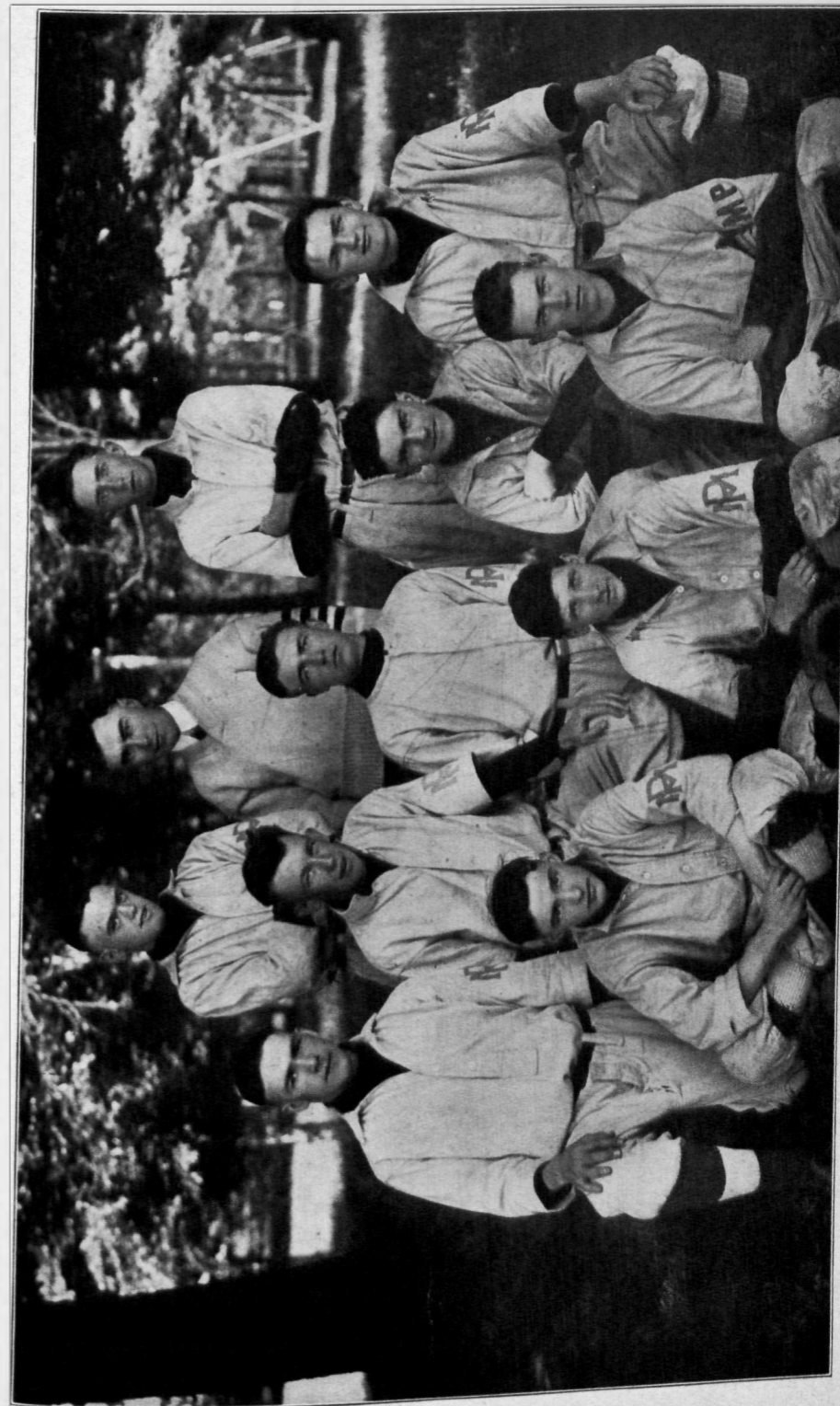
**T**HE baseball team of 1918 walked away with the Central Michigan Championship and was tied with Howell for State. Although we lost two games we trimmed the same teams in the return games.

The first game at Evert on April 26, found as our line-up Capt. Imhoff short stop; C. Spring, third base; R. Matteson, second base; I. Francis, first base; D. Ubele, pitcher; A. Dunning, M. Van Riper, and W. Phillips, outfielders; and E. Orser, catcher, and H. Myer, sub. Evert won by one score, which was forced in by a walked man. Score 1-0.

The return game with Evert found our team somewhat stronger and shifted. On third base was F. Beddow in place of C. Spring, who was placed in the pitcher's box. As the result of this we had two pitchers. We won in an over time game 3-2. D. Ubele saved the game with his three base hit.

Although we lost the next game to Shepherd on the following week we outplayed them in every respect. Our fellows started out with a rush and ran in three scores the first inning but for some unexplained reason our opponents obtained more scores than we did during the game. Final score 7-6.

In the return game with Shepherd we beat them in an over time game 7-6. Again in this game we ran in three scores in the first inning but at the beginning of the eighth inning the score was 6-4 in favor of Shepherd.



BASE BALL TEAM